

# Tunstall Gem5

## User Guide

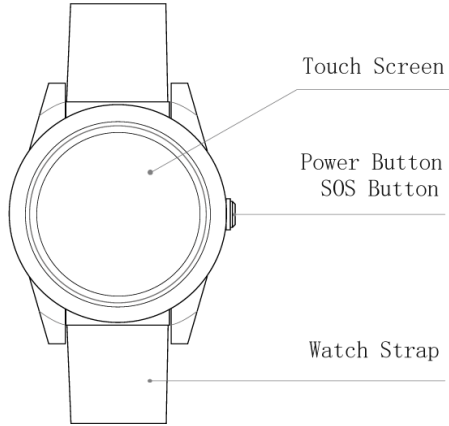


# Table of Contents

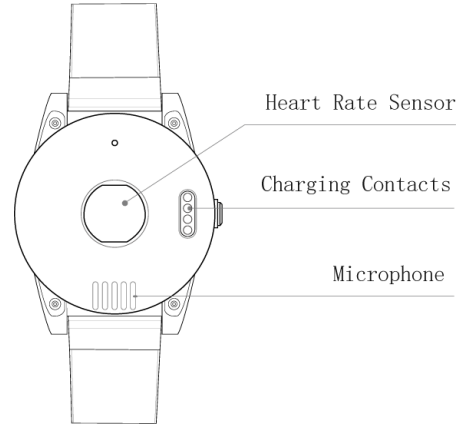
<b>Getting To Know Your Watch</b>	<b>1</b>
<b>Charging Your Watch</b>	<b>2</b>
<b>Functions and Basic Settings</b>	<b>3</b>
<b>Heart Rate Measurement</b>	<b>3</b>
<b>Activating an SOS Alarm</b>	<b>4</b>
<b>Fall Alarm</b>	<b>4</b>
<b>Getting a GPS Fix</b>	<b>5</b>
<b>General Specifications</b>	<b>6</b>
<b>Contact Details</b>	<b>7</b>

# Getting To Know Your Watch

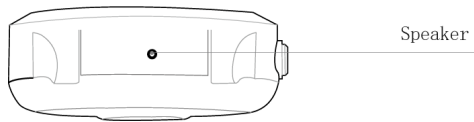
Front



Back



Side



Accessories  
USB Cable



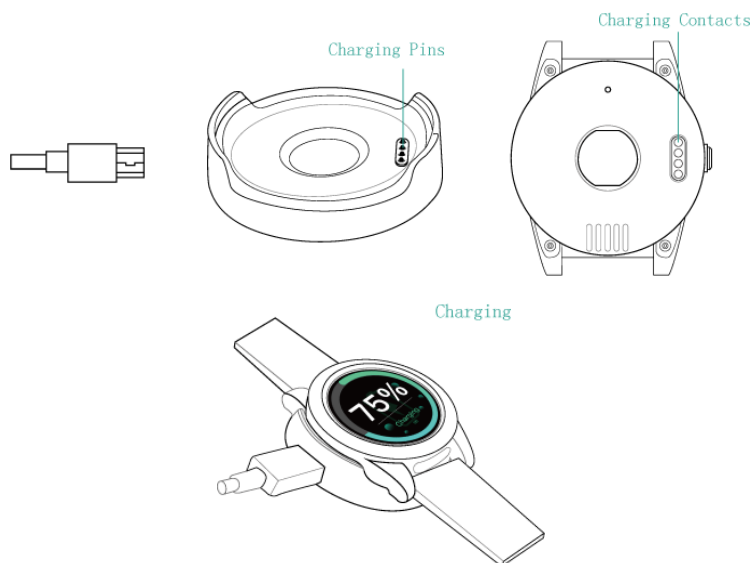
Watch Strap



Charging Base



## Charging Your Watch

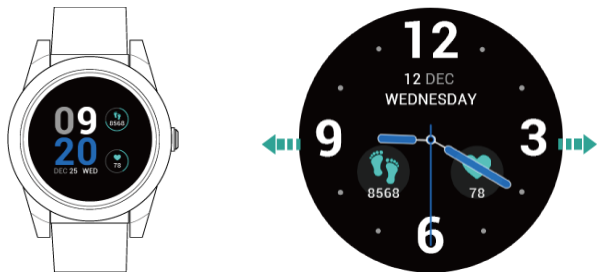


- Connect the USB cable from charging base to the AC adaptor.
- Place the watch into the charging base correctly, you will hear spoken confirmation "your watch is charging."
- Please fully charge the battery daily for around 2 hours or when battery is low.

**TIP** The watch battery is not removable. After a long period of inactivity, the watch may not be turned on due to low battery. please charge it every day to ensure that the watch can work normally.

## Functions and Basic Settings

When the watch is turned on, slide leftwards or rightwards to view all available functions. It displays Watch Face, Heart Rate, Steps and Settings.



1. On the watch face, you can see time, date, heart rate and steps.
2. There are five watch faces to select from, two analog and three digital. Slide right to the end and click settings, select watch face and choose your preferred option by sliding left and right.

## Heart Rate Measurement

Wear the watch on the left hand and click heart rate, after several seconds checking, the screen will display your heart rate BPM.



## Activating an SOS Alarm

To activate SOS alarm, press the side button for 3 seconds until you feel the watch vibrate.



- After SOS alarm is activated, you will hear a voice prompt confirming the activation of the SOS alert and allowing you approximately 10 seconds to cancel the alarm. If the SOS is not cancelled in time an SOS alert text message is immediately sent to the emergency contact numbers followed by the outgoing calls.
- If the watch fails to connect to the first number, it will call the second number after delay of 10 seconds. In case the second number fails to be connected as well, the system will connect to the third number etc.
- Between each call, it will have 10 seconds delay, during this time, user can stop call sequence or prevent a possible false alarm by pressing SOS button.

## Fall Alarm

The watch can automatically detect a fall. When this occurs the watch will give a warning message to the user.



- Some daily activities like sports or even sitting down abruptly can trigger the fall alarm.
- The wearer has a short time to cancel a fall alarm by clicking the Cancel on the watch. If the alarm is not cancelled, emergency contacts will be called.

**TIP** It is possible that the watch will not detect every real fall. We **strongly** advise the wearer to press the SOS button in any emergency situation, if they are able.

## Getting a GPS Fix

To get an initial GPS fix, go outdoors or near a window so the watch can get a fix on the satellites. This could take few minutes depending on your environment.



**GPS**

**TIP** GPS functionality may be unavailable or inaccurate in some locations (for example, availability or accuracy of GPS location maybe impacted inside buildings or near tall buildings or other tall features or underground).

## General Specifications

**Dimension:** 47.5mm\*16.9mm / 1.87in\*0.66in

**Weight:** 65g / 2.29oz

**Battery:** Rechargeable, 3.7V,580mAh

**Battery life:** Up to 24 hours under normal environmental conditions

**Charging voltage:** 5V DC

**Waterproof:** IP67

**Locating technology:** GPS

**TIP** Please comply with the instructions to extend the watch life:

- Don't use & store the watch in dusty, hot, cold, electric, chemical, areas. Please always keep the watch and accessories dry.
- Don't drop, shake or knock the watch, Rough handling can break it.
- Clear the watch with a piece of dry cloth. Don't clean in chemicals, detergent.
- Don't disassemble or refit the watch as it will void your warranty.
- Using other batteries will cause unwanted situation.
- To avoid accident, never play the watch while driving.
- Please turn off the watch in aircraft and follow any restrictions. Wireless devices can cause interference in aircraft.



## Contact Details

### AUSTRALIA

Tunstall Australasia Pty Ltd

ABN 44 059 121 863

Locked Bag 1

985 Kingsford Smith Drive

Eagle Farm QLD 4009

Telephone: 1800 603 377

Fax: 1800 435 570

Sales enquiries: [au.sales@tunstall.com](mailto:au.sales@tunstall.com)

Support enquiries: [au.info@tunstall.com](mailto:au.info@tunstall.com)

[www.tunstallhealthcare.com.au](http://www.tunstallhealthcare.com.au)

### NEW ZEALAND

Tunstall New Zealand Ltd

Business No. 3502431

PO Box 13153

Tauranga 3110

NEW ZEALAND

Telephone: 0800 488 678

Fax: 07 571 2685

Sales enquiries: [nz.sales@tunstall.com](mailto:nz.sales@tunstall.com)

Support enquiries: [nz.info@tunstall.com](mailto:nz.info@tunstall.com)

[www.tunstall.co.nz](http://www.tunstall.co.nz)

Our policy of continual development means that product specifications and appearance may change without notice.

Tunstall does not accept any responsibility for any errors and omissions contained within this document.

©2023 Tunstall Group Ltd.

®Tunstall and Tunstall Gem are trademarks